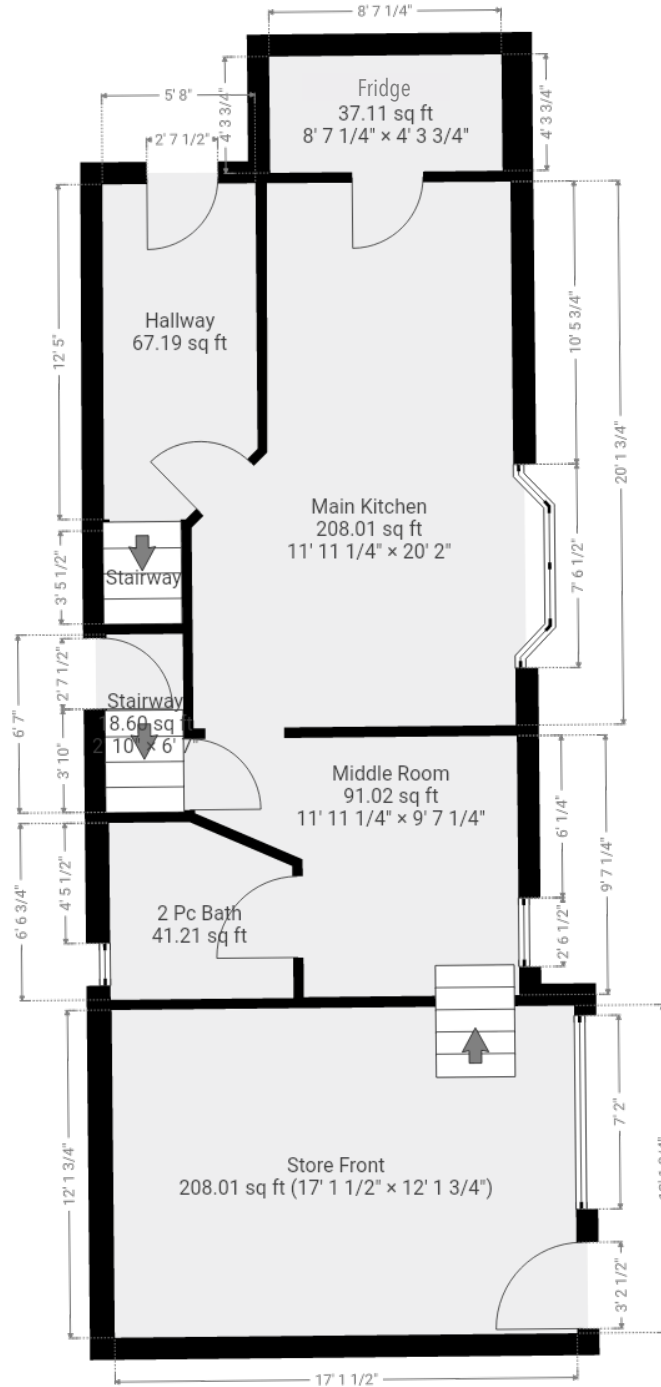
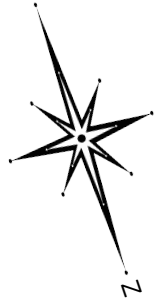


Cake and Loaf Bakery

Hamilton, ON

Total Above Grade Exterior ft²
Approx Above Ground Exterior Area = 1946.87 ft²

Total Exterior ft²
Approx Exterior Area (basement included) = 2486.31 ft²



Ground Floor

(above grade)

Approx Interior Area = 711.03 ft²

Approx Exterior Area = 819.72 ft²

All room dimensions and floor areas must be considered approximate and are subject to independent verification.

Lidar iScan by Cathy Koop Photography

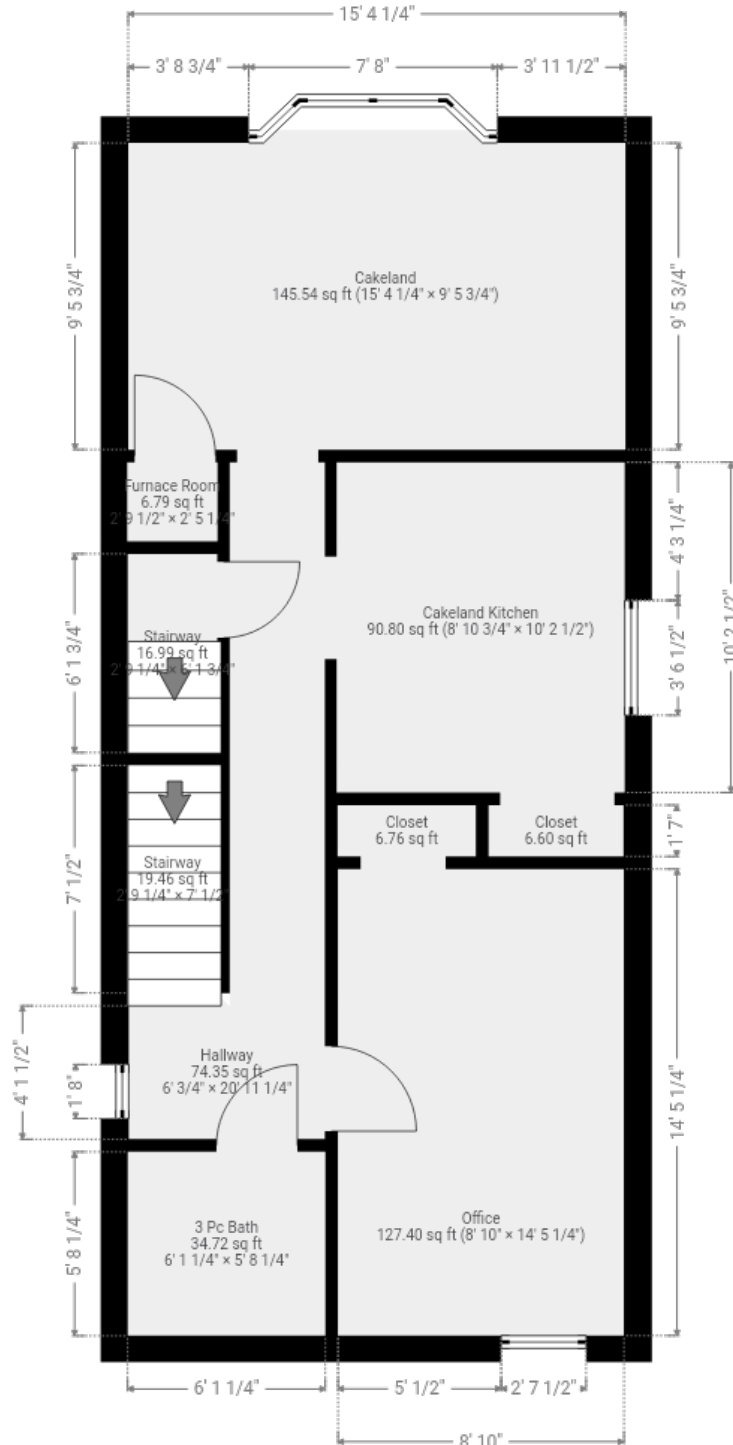


Cake and Loaf Bakery

Hamilton, ON

Total Above Grade Exterior ft²
Approx Above Ground Exterior Area = 1946.87 ft²

Total Exterior ft²
Approx Exterior Area (basement included) = 2486.31 ft²



Second Floor

(above grade)

Approx Interior Area = 565.21 ft²
Approx Exterior Area = 653.68 ft²

All room dimensions and floor areas must be considered approximate and are subject to independent verification.

Lidar iScan by Cathy Koop Photography

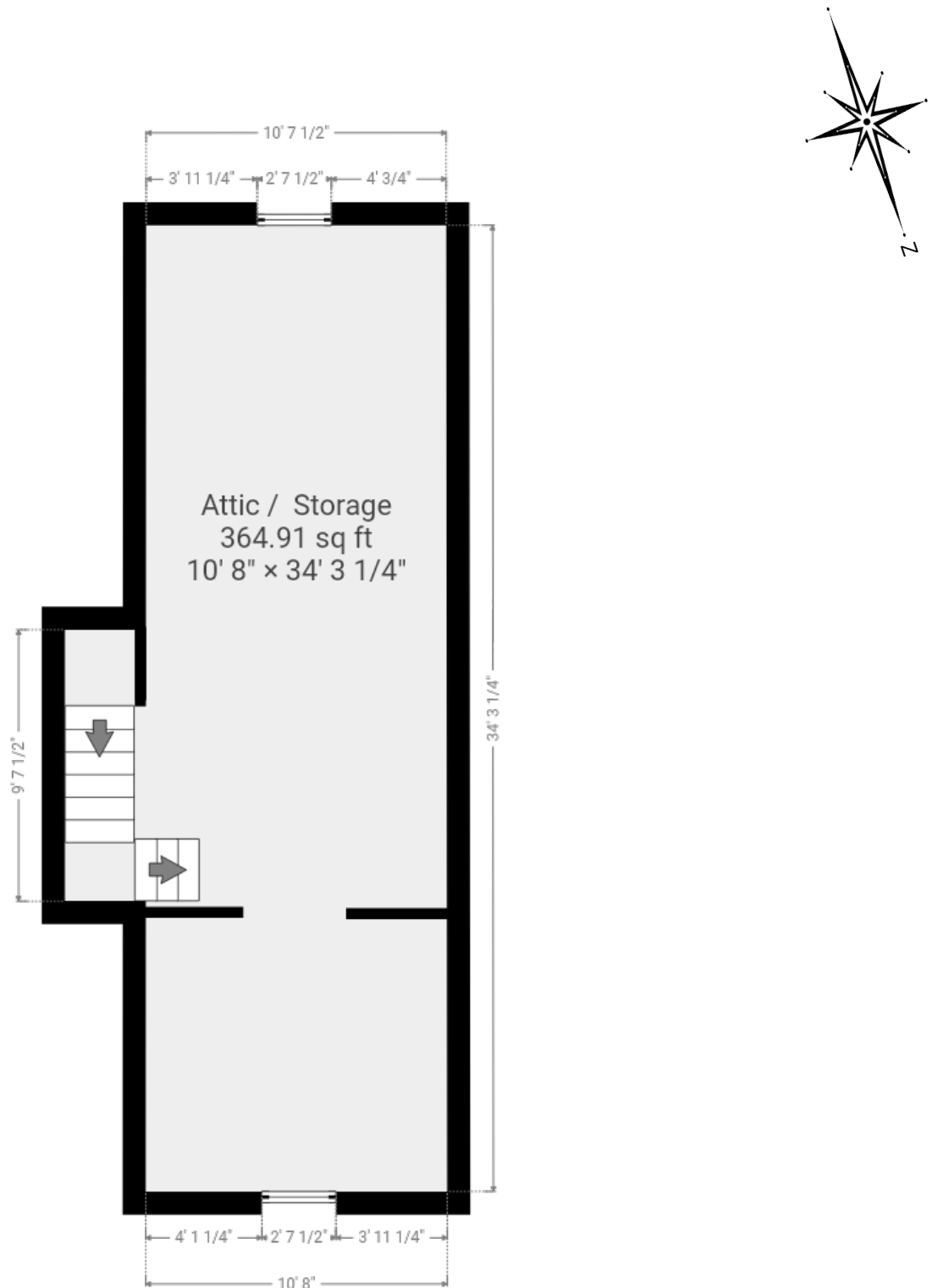


Cake and Loaf Bakery

Hamilton, ON

Total Above Grade Exterior ft²
Approx Above Ground Exterior Area = 1946.87 ft²

Total Exterior ft²
Approx Exterior Area (basement included) = 2486.31 ft²



Third Floor (above grade)

Approx Interior Area = 392.29 ft²
Approx Exterior Area = 473.47 ft²

All room dimensions and floor areas must be considered approximate and are subject to independent verification.

Lidar iScan by [Cathy Koop Photography](#)

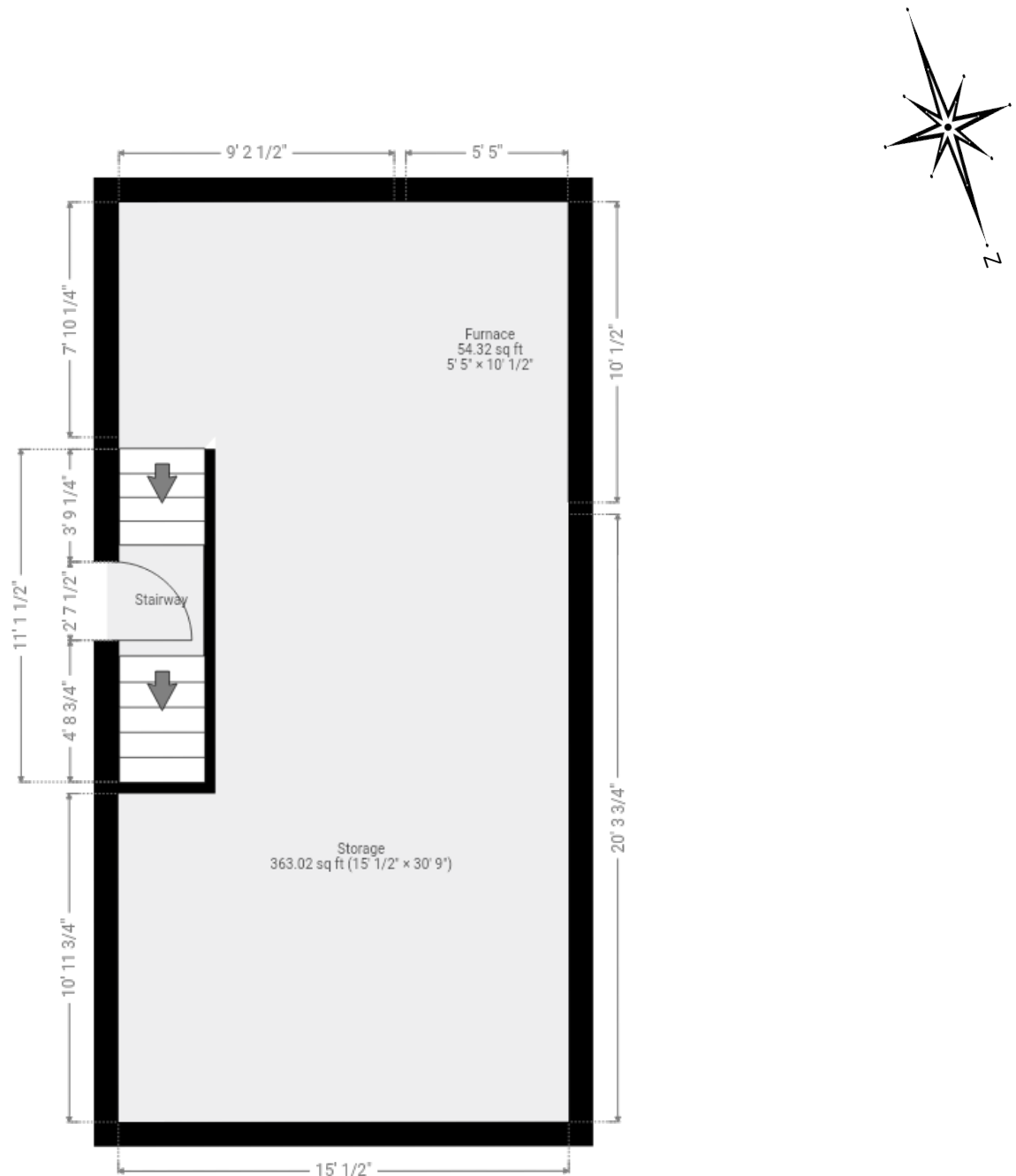


Cake and Loaf Bakery

Hamilton, ON

Total Above Grade Exterior ft²
Approx Above Ground Exterior Area = 1946.87 ft²

Total Exterior ft²
Approx Exterior Area (basement included) = 2486.31 ft²



Basement

(below grade)

Approx Interior Area = 461.64 ft²

Approx Exterior Area = 539.44 ft²

All room dimensions and floor areas must be considered approximate and are subject to independent verification.

Lidar iScan by [Cathy Koop Photography](#)



Summary

Main Room Interior Measurements

	Imperial	Metric	Interior ft ²
Ground Floor (above ground) - Approx Exterior ft² = 819.72 ft²			
Store Front	17'2 x 12'2	5.23m x 3.71m	208.01 ft ²
Middle Room	11'11 x 9'7	3.63m x 2.92m	91.02 ft ²
Main Kitchen	11'11 x 20'2	3.63m x 6.15m	208.01 ft ²
Fridge	8'7 x 4'4	2.62m x 1.32m	37.11 ft ²
2 Pc Bath	6'9 x 6'7	2.06m x 2.01m	41.21 ft ²

Second Floor (above ground) - Approx Exterior ft² = 653.68 ft²

Office	8'10 x 14'5	2.69m x 4.39m	127.40 ft ²
Cakeland	15'4 x 9'6	4.67m x 2.90m	145.54 ft ²
Cakeland Kitchen	8'11 x 10'3	2.72m x 3.12m	90.80 ft ²
3 Pc Bath	6'1 x 5'8	1.85m x 1.73m	34.72 ft ²
Furnace Room	2'10 x 2'5	0.86m x 0.74m	6.79 ft ²

Third Floor (above ground) - Approx Exterior ft² = 473.47 ft²

Attic / Storage	10'8 x 34'3	3.18m x 10.44m	364.91 ft ²
-----------------	-------------	----------------	------------------------

Basement (below ground) - Approx Exterior ft² = 539.44 ft²

Storage	15'1 x 30'9	4.60m x 9.37m	363.02 ft ²
Furnace	5'5 x 10'1	1.65m x 3.07m	54.32 ft ²

Rooms have irregular shapes and, as such, cannot be truly represented by one length and width. The length and width listed above are the longest length and width of the room. Because of this, room area is not always equal to the product of length and width but has been calculated in any floor area accurately using all wall measurements.

All room dimensions and floor areas must be considered approximate and are subject to independent verification.

Lidar iScan by [Cathy Koop Photography](#)

